

IMPORTANT!

To keep your knees safe the Robot stem is a mid-clamp, (No bolts sticking out) this means it's critical that the stem is aligned and torqued down on the fork steerer before the handle bar clamps are torqued.

The bars can be fitted but must be loose until the steerer bolts are tight
If this is not done the stem will not clamp the steerer.

FITTING

#1 Remove all bolts and apply a small amount of grease to the threads and re-insert

#2 Ensure steerer is free from burs and grease before fitting the stem to the steerer

#3 Push stem down onto steerer, it might be a snug fit.

#4 Fit bars but keep them loose

#5 Align stem as required and snug top cap down.

#6 Evenly torque main bolts to 5 nm and re-check them

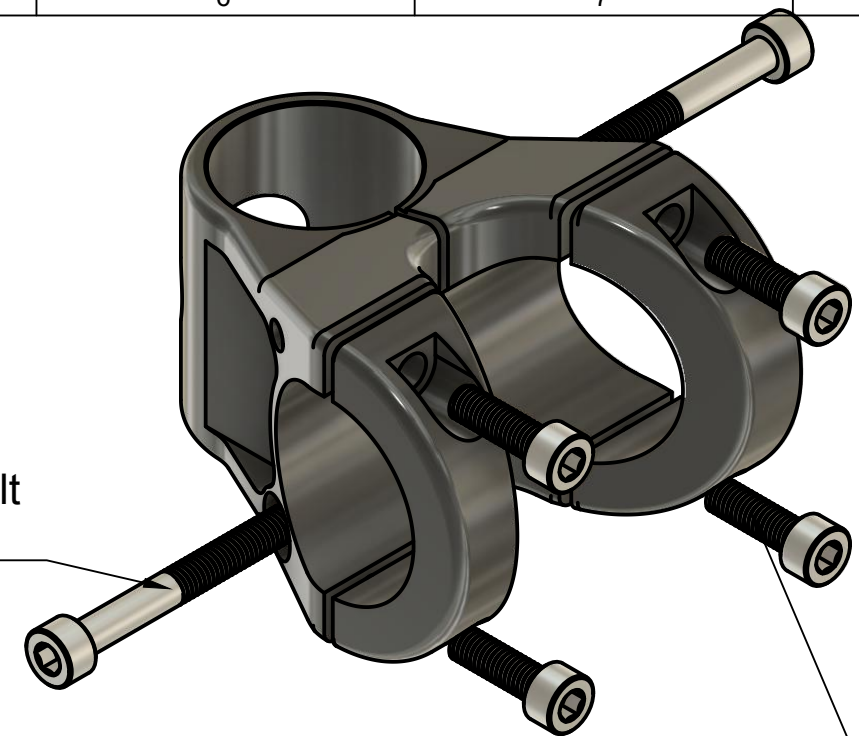
#7 Position the bars to your liking and evenly torque to 5 nm, keep the bar split gap even side to side and top and bottom.

Notes:

The stem is not designed to have headset spacers on the top of the stem, if you wish to do that use the provided starter spacer (small diameter down) then stack your spacers on top.

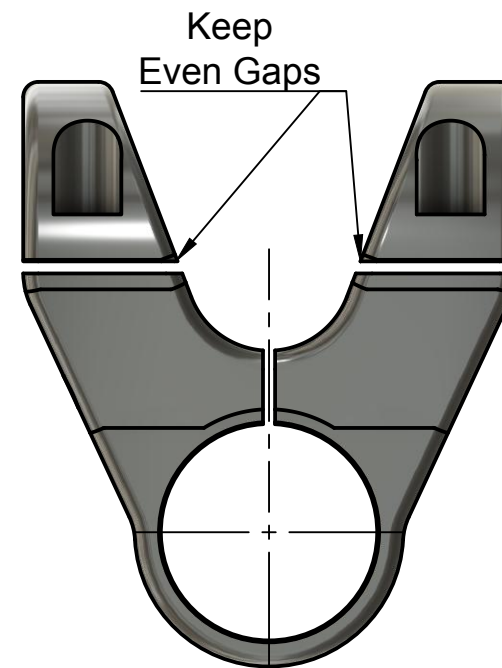
Periodically check all bolts

Remove and grease all bolt threads

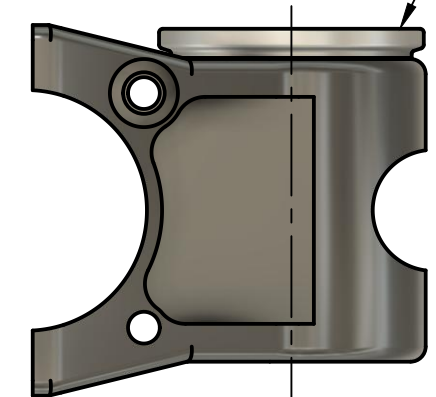



Remove and grease all bolt threads

<<<< Align stem >>>>



Special top spacer if you require spacers on top



Dept.	Technical reference	Created by rideworks	13/09/2018	Approved by paul
		Document type	Document status	
		Title Robot Stem	DWG No.	
Rev.	Date of issue	Sheet		1/1