

MTB 73 Shell BSA 30/DUB BB

Rideworks use angular contact bearings in our BB's of this type, angular contact (A/C) bearings require some preload, **Use the provided light wave washer ensure it is completely flattened against seal face after the cranks are torqued .**

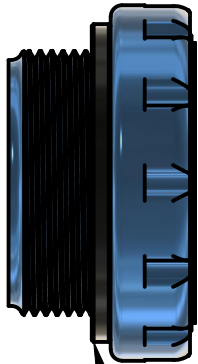
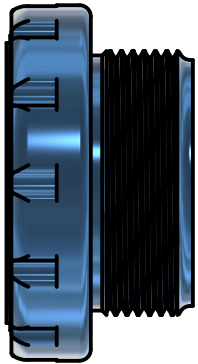
Install Tool:

- ParkTool BBT-79 or similar.
- BSA 30/DUB DOES NOT COME WITH MIDDLE TUBE
- With threaded bottom bracket shells, it is critical that the shell's threads have been properly chased and the shell faced.
- Grease threads well before install, use high quality grease.
- For titanium BB shells, anti-sieze grease is recommended.
- Tighten cup to 35Nm
- Support NDS seal when pushing through crank spindle to prevent seal popping out.


To remove.
Rotate drive side cup clockwise
And non drive side cup anti clockwise

NON DRIVE SIDE

DRIVE SIDE



73 mm Shell Requires 1 x 2.5 Spacer

Dept.	Technical reference	Created by Rideworks	Approved by
		Document type	Document status
		Title BSA 30/DUB	DWG No.
Rev.	Date of issue	Sheet	1/1